

MEZE

LONDON'S LUXURY JOURNAL

ISSUE 14
APRIL
04
ISBN 2047-987 13



Perfect timing

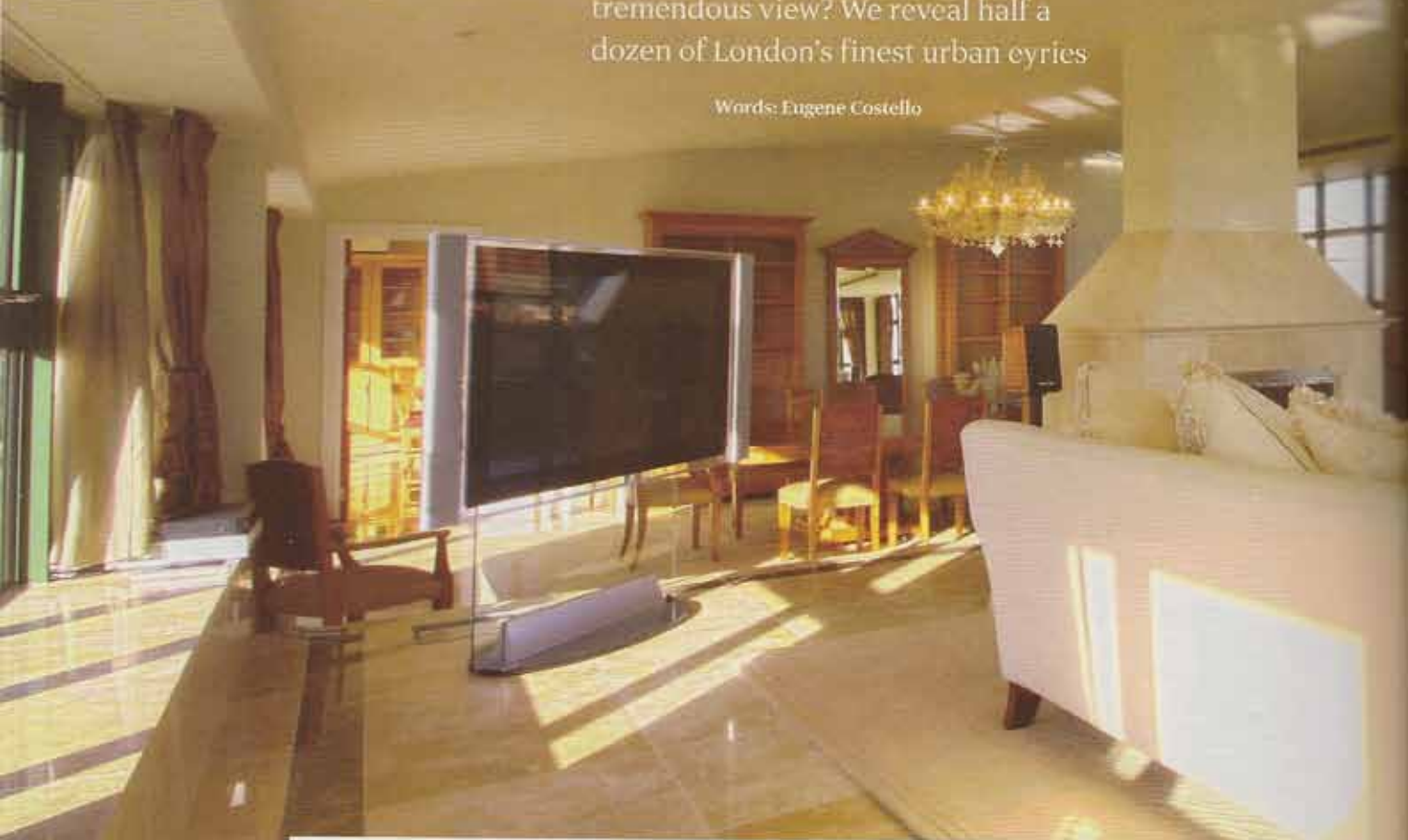
How celebrity jeweller Jacob Arabo shook up the watchmaking world

+ *The best... London members' clubs / airlines for travelling in style / classic British brands*

Life at the **TOP**

Looking for a city pad with a tremendous view? We reveal half a dozen of London's finest urban eyries

Words: Eugene Costello





William Hunt Mansions, Harrods Village, Barnes

Barnes is home to Harrods Village, sitting on the south bank of the Thames, right by iconic Victorian masterwork, Hammersmith Bridge – arguably the loveliest of London's crossings. The block was formerly the depository for Harrods, and it remains a Grade II-listed building. Four bedrooms offer superb views and there is secure parking for four vehicles. Harrods Village is one of very few riverside developments in London to offer an on-site swimming pool. And the wraparound terrace means you can treat yourself to views downriver towards Richmond and beyond or upriver towards the iconic skyline of the City.

Price: POA

Agent: Knight Frank Riverside

Call: +44 (0)20 7590 2450

Web: knightfrank.co.uk

CQ London, Limehouse

Newly finished Iona Tower, the second phase at CQ London, from A2Dominion New Homes is just a short walk to the DLR at Westferry or Limehouse with bragging rights thrown in. Right by Limehouse Basin, a stroll among the Dutch barges and narrowboats on a Sunday to go for a coffee, a croissant and the crossword makes for peace in the heart of the City. And when you head back up, check out the views at sunset – apartments on the top (12th) floor have access to a communal roof terrace, with panoramic views of The City, Canary Wharf, Limehouse and

London landmarks including the Gherkin and the Shard. The top floor of Iona Tower consists of a two-bedroom apartment with a study and two three-bedroom apartments. It needn't break the bank, either – at these prices, the apartments make perfect weekday pieds-a-terres...

Price: From £440,000 for a top-floor apartment

Call: +44 (0)20 3069 8270

Web: cq-london.co.uk





Langham Square, Putney

So – you want the views, you want the easy access to the City and West End but you want to feel a little less constrained by the urban jungle? Simple – Putney is the place for you. With its riverside restaurants, proximity to Barnes Common and Richmond Park and superb links to central London, Putney offers the best of all worlds.

St James, the award-winning luxury development branch of Berkeley homes, is finishing an impressive collection of apartments and penthouses in SW15. Unique architectural design and modern use of space means mezzanine floors in a selection of apartments. These are aimed at the young professional on the move, with both Waitrose and Costa Coffee on-site, and a superb collection of stock on offer. Like CQ London, this is one view that won't cost the earth, while still offering prestige and postcode cachet.

Price: From £460,000 for a two bedroom apartment

Call: +44 (0)203 597 7070

Web: langhamsquare.co.uk



High rollers

Fountain House, Park Lane

So we're wheeling out the big guns here. This five-bedroom penthouse apartment has some of the finest views over London. Looking out across Hyde Park, high above the boughs and treetops, the owner and pals get to sip cocktails on their very own roof terrace that is as hip and well-appointed as any of the city's style bars. What better place to gaze westwards, watching the sun dip below the horizon far, far away. With a spec that puts many five-star hotels to shame, only the shockingly rich need apply.

Price: £19.75m

Agent: Knight Frank Mayfair

Call: +44 (0) 20 7499 1012

Web: knightfrank.co.uk

The Hanover, Hallam St, Marylebone

Ah, Marylebone... we love it. The cheese paradise that is La Fromagerie. The glorious roof-terrace above Orrery restaurant that those in the know head for on a summer's evening. But now you can enjoy your own rooftop eyrie in the heart of Marylebone Village. The Hanover is a four-bed penthouse apartment in a Grade II-listed building. Two private terraces bring the outside in, and the larger of the two offers both seclusion and space. The perfect place for champagne and canapes on a mild spring evening.

Price: £7.95m

Agent: Knight Frank, Mount St

Call: +44 (0)20 7483 8349

Web: knightfrank.co.uk

Apartment 6, Gloucester Road

Apartment 6 may sound like something out of *The Prisoner*, but it is in fact a plum four-bed penthouse apartment in South Kensington. Step in from your private lift and the vast west-facing reception room has the largest of three – count 'em – private terraces. The kitchen has one too, just in case you need to get a little fresh air when the caterers are being simply too slow. It's right by Gloucester Road tube, though this place is more about making the most of Beluga caviar than your Oyster card.

Price: £4.75m

Agent: Knight Frank South Kensington

Call: +44 (0)20 7870 4000

Web: knightfrank.co.uk